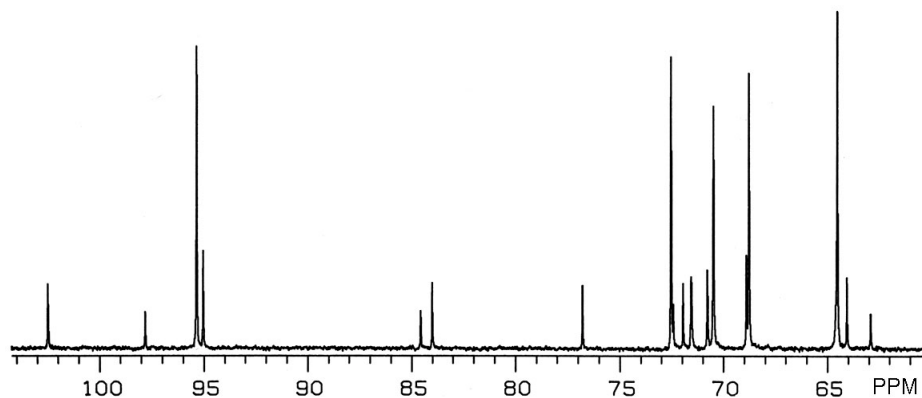


**D-ribose**  
 **$^{13}\text{C}$  { $^1\text{H}$ } Spectrum (75 MHz) in  $\text{D}_2\text{O}$**



**Assignments**

$\alpha$ -pyranose

C1	95.0
C2	71.52*
C3	70.7
C4	68.8
C5	64.5

$\beta$ -pyranose

C1	95.3
C2	72.5
C3	70.4
C4	68.7
C5	64.5

$\alpha$ -furanose

C1	97.8
C2	72.4
C3	71.50*
C4	84.5
C5	62.9

$\beta$ -furanose

C1	102.4
C2	76.7
C3	71.9
C4	84.0
C5	64.0

**Specialty Stable Isotopes for the Biomedical Sciences**